



**805/466 King Street Newcastle NSW**

**2**  **2**  **1** 

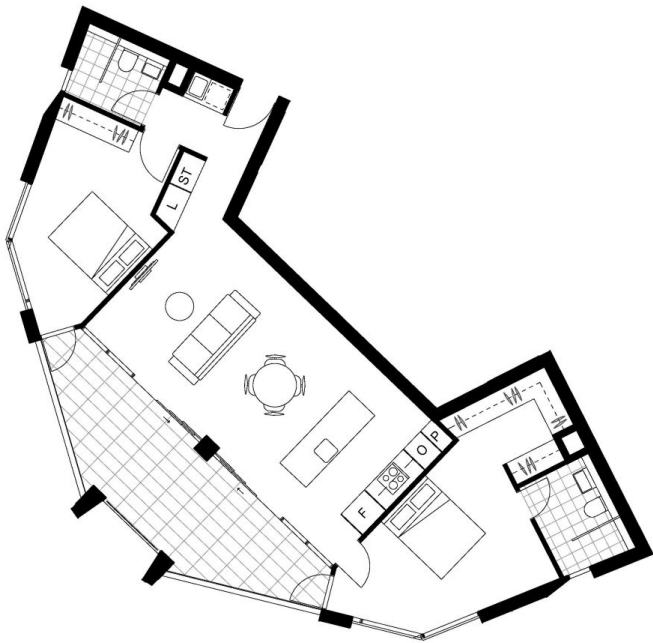
LOVELY 2 BEDROOM APARTMENT IN THE ICONIC 'VERVE' NEWCASTLE WEST  
THE PROPERTY BOASTS THE FOLLOWING :  
2 Spacious bedrooms with builtins  
Ensuite to main and 2nd full bathroom  
Open plan living & dining area leading to large terrace with views to the mountains.  
State of the art kitchen with quality Miele appliances  
Reverse cycle a/c  
Secure parking for 1  
All this within a stroll to transport, shopping and the Harbour Foreshore

**Type** : Apartment

**View** : <https://www.street.net.au/lease/nsw/newcastle-region/newcastle/residential/apartment/7647757>



**Julie McNab**  
**4926 5111**



APT NO.	LEVEL
305/466	03
405/466	04
505/466	05
605/466	06
705/466	07
805/466	08
905/466	09
1005/466	10

	2
	2
	1

AREA	SIZE
LIVING	92m <sup>2</sup>
DECK	20m <sup>2</sup>
GARAGE	13m <sup>2</sup>
TOTAL	125m <sup>2</sup>



DISCLAIMER: The particulars are set out as a general outline for the guidance of intending purchasers and do not constitute an offer or contract. All descriptions, dimensions, references to conditions and necessary permutations for use and other details are given in good faith and are believed to be correct, but any intending purchasers should not rely on them as statements or representations of fact, but must satisfy themselves by inspection or otherwise to the correctness of each item, and where necessary seek advice. The furniture and furnishings depicted are not included with any sale and purchasers must refer to the contract for sale for the list of inclusions. The position of furniture and furnishings should not be taken to indicate the final position of power points, TV connection points and the like. Planting is indicative only. Bulkheads necessary for services are not depicted. No third party supplier or their agents has any authority to make or give any representations or warranty in relation to this property. Images are computer generated and indicative only. Completed apartments may vary from the image shown.