

2/41 Honeysuckle Drive Newcastle NSW

2 🚗

EAST BUILDING

- 197m2 Internal
- includes 2 Car spaces

Located in the award winning Horizon complex opposite Hunter Water Headquarters.

The only commercial suite remaining and offered as a cold shell.

Will suit commercial office use, as by-laws do not permit retail use and there is no provision for grease traps or extraction fans.

The Horizon Development is dominated by owner occupier residents.

Gym, bike store and end of trip amenity plus access to

[For full version visit the website](https://www.street.net.au)

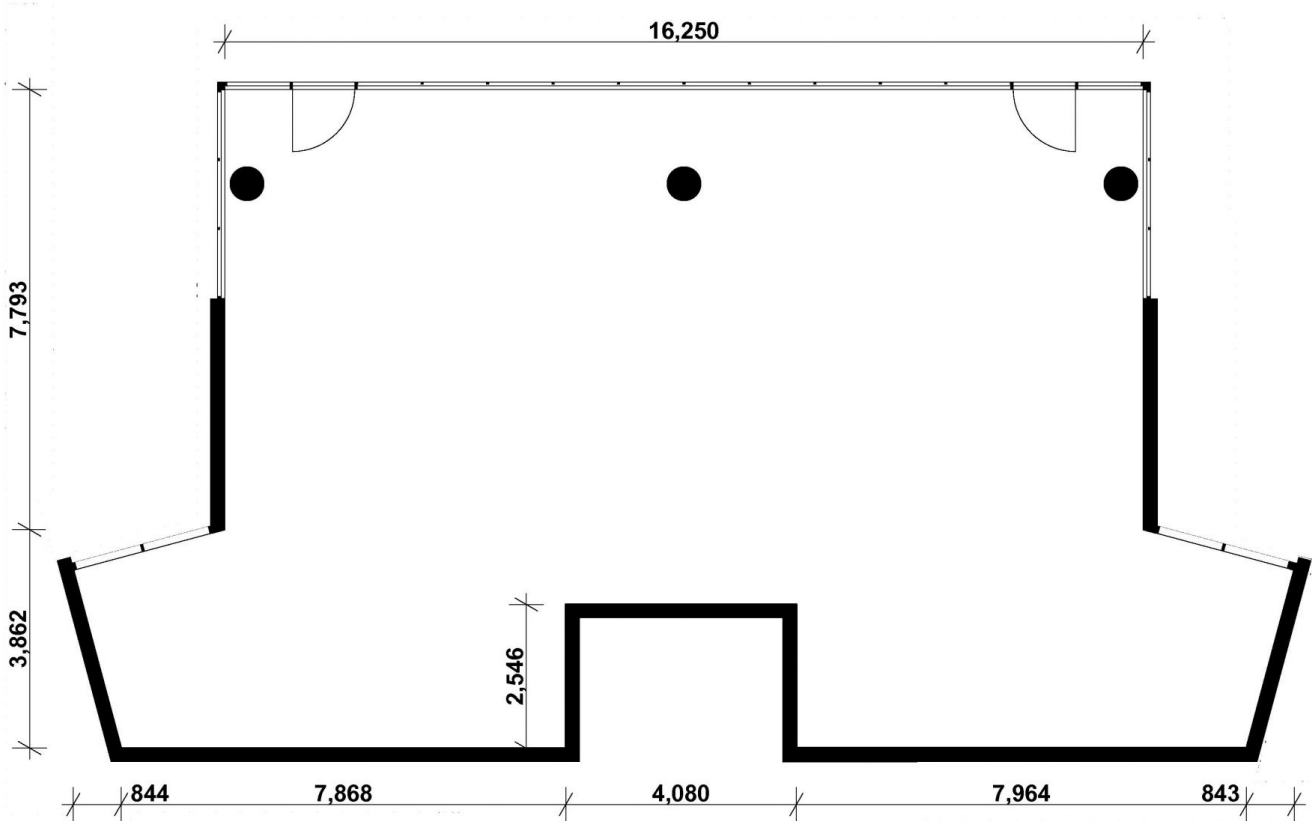
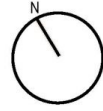
Type : Offices
Price : Price on Application
Building Size : 197 sqm
View : <https://www.street.net.au/sale/nsw/newcastle-region/newcastle/commercial/offices/7671091>



Andrew Walker
02 4926 3933

HORIZON

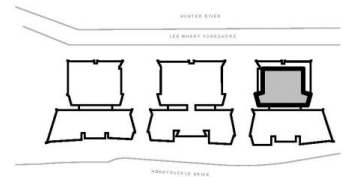
ON THE HARBOUR



COMMERCIAL

SUITE 2/41

INTERNAL AREA: 197 m²
CARPARK AREA: 52 m²



LOT 114

ISSUE 1

DISCLAIMER: The particulars are set out as a general outline for the guidance of intended purchasers and do not constitute an offer or contract. All descriptions, dimensions, references to conditions and necessary permutations for use and other details are given in good faith and are believed to be correct, but any intending purchasers should not rely on them as statements or representations of fact, but must satisfy themselves by inspection or otherwise to the correctness of each item, and where necessary seek advice. The furniture and furnishings depicted are not included with any sale and purchasers must refer to the contract for sale for the list of inclusions. The position on furniture and furnishings should not be taken to indicate the final position of power points, TV connection points and the like. Planting is indicative only. Bulkheads necessary for services are not depicted. No third party supplier of their agents has any authority to make or give any representations or warranty in relation to this property. Images are computer generated and indicative only. Completed apartments may vary from the images shown.