

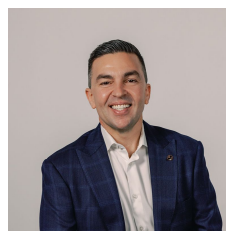
327 Turton Road New Lambton NSW

2 1 1

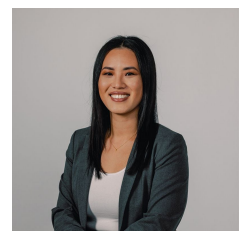
Claim your spot in this solid entry-level home that beckons you to step right in and discover its immediate liveability, all while promising untapped potential that's simply irresistible. Positioned on a 442.6sqm (approx) plot of land, this residence boasts roomy two-bedroom interiors offering immediate comfort. As you enter, a welcoming air-conditioned lounge awaits, complemented by a gas-equipped eat-in kitchen. Beyond lies a spacious blank canvas backyard, ready to transform into your envisioned deck, extension, or even a new garage (STCA).

Whether you're an aspiring homeowner or a savvy investor seeking a foothold in this coveted neighbourhood, this dwelling could be the answer to your desires. Don't overlook its investment potential - a strategically

Type : House
Price : \$ 730,000
Land Size : 442.6 sqm
View : <https://www.street.net.au/sale/nsw/newcastle-region/new-lambton/residential/house/7689232>

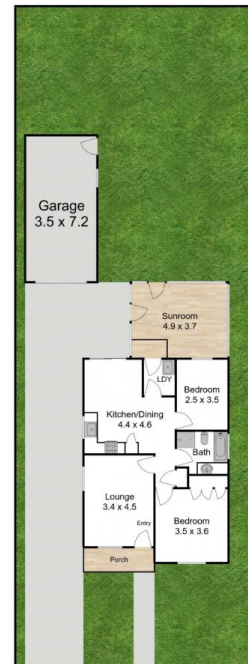
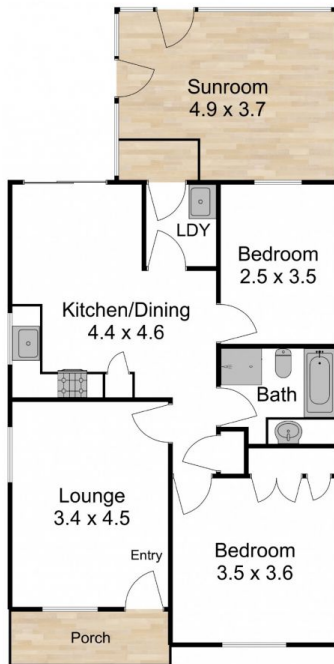


Damon Sellis
02 4926 3933



Emily Wong
02 4926 3933

[For full version visit the website](https://www.street.net.au)



Site Plan



327 Turton Road,
New Lambton

Measurements are approximate and are to be used as a guide only

Street
Property.