



406/35 Shortland Esplanade Newcastle East NSW

2 2 2

Rising above Newcastle Beach directly opposite the canoe pool, this 'Azura' apartment delivers the beachfront dream. Immersed in spectacular ocean and sand vistas at the front, and harbour views at the rear, you can savour the coastal beauty from the comfort of your own home. Check the surf conditions from your balcony each morning, and as the day unfolds, watch dolphins frolic in the waves, marvel at whales breaching on their migratory journeys, and witness the ships sailing into port. This luminously light-filled residence truly offers a front-row seat to the mesmerising symphony of nature and human activity on the stunning Newcastle coastline.

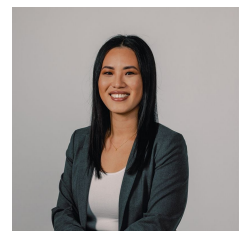
Effortlessly embracing a relaxed and inviting lifestyle, this apartment offers a delightful retreat. Two generously sized

[For full version visit the website](https://www.street.net.au)

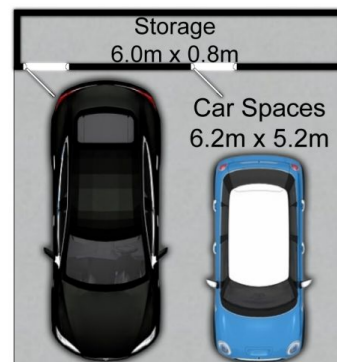
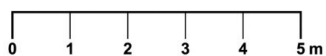
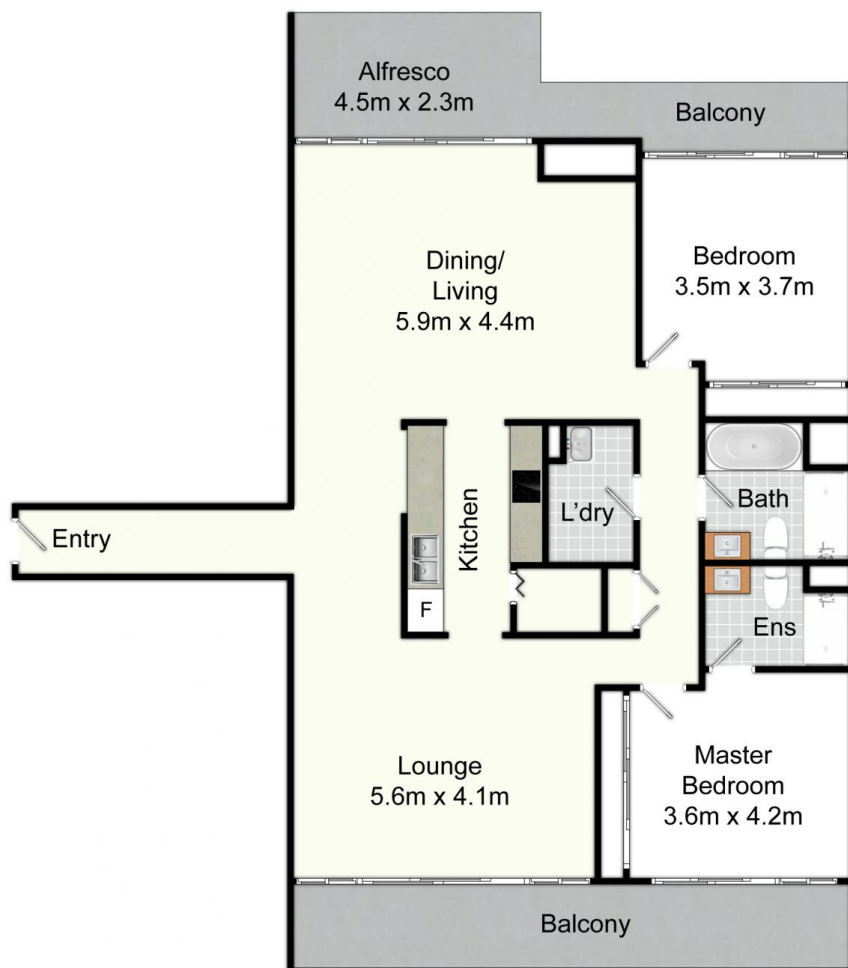
Type : Apartment
Price : \$ 1,950,000
Building Size : 161 sqm
Land Size : 199 sqm
View : <https://www.street.net.au/sale/nsw/newcastle-region/newcastle-east/residential/apartment/7752788>



Damon Sellis
02 4926 2022



Emily Wong
02 4926 2022



406/35 Shortland Esplanade, Newcastle East

All information contained herein is gathered from sources we deem reliable. However, we cannot guarantee its accuracy and act as a messenger only in passing on the details. Interested parties should rely on their own inquiries and the contract for sale. The floor plans are artist's impressions only. The site plan is not to scale.

Street
Property.