

11 Chris Place Edgeworth NSW

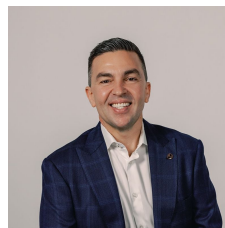
4  2  2 

Nestled in a new subdivision with quality homes constructed in 2016, this single-level gem is tailor-made for a growing family. With a practical layout that seamlessly flows across one level, you'll find two distinct living spaces, along with four robed bedrooms and two bathrooms.

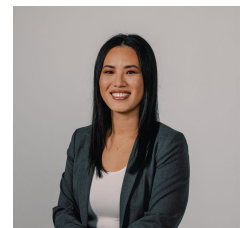
The heart of the home is the island kitchen, a hub for the family with its gas cooking and welcoming atmosphere - the go-to spot for gatherings. Step outside to a north-facing alfresco area and side garden, creating the perfect setting for outdoor dining and play. The lower level backyard offers ample space for a trampoline or a playhouse, all against the backdrop of scenic Mount Sugarloaf views and nightly sunsets. And to put the cherry on top, there's a convenient double garage.

Close by, Edgeworth Town Square and Cameron Park

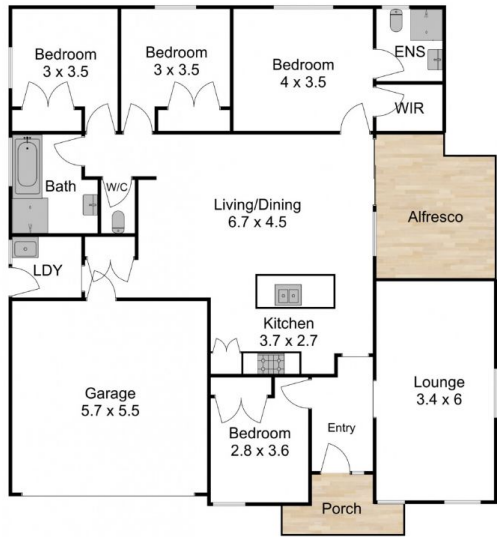
Price : \$ 850,000
Land Size : 647.8 sqm
View : <https://www.street.net.au/sale/nsw/lake-mac-quarie-west/edgeworth/residential/house/7834098>



Damon Sellis
02 4926 3933



Emily Wong
0408 022 799



Site Plan



11 Chris Place,
Edgeworth

Measurements are approximate and are to be used as a guide only

Street
Property.