



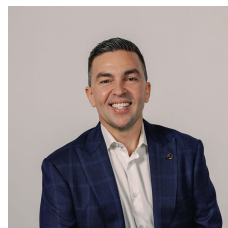
683 Pacific Highway Belmont NSW

4 3 1

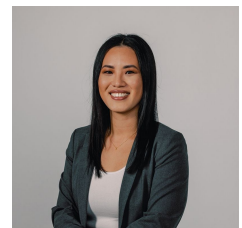
Nestled between Belmont Lagoon Reserve and the picturesque shores of Lake Macquarie, this cherished home offers a lifestyle that extends far beyond its initial kerb appeal. Set on a generous 604.5sqm block (approx), this three-bedroom, two-bathroom residence is a veritable time capsule, boasting a classic layout adorned with some original features. However, its true allure lies in the untapped potential it holds for a contemporary transformation.

The rear of the property unveils a self-contained studio, complete with a kitchenette and bathroom, presenting a multitude of possibilities. Whether it serves as a haven for grown children on the path to homeownership, an accommodating space for aging parents, an extension for a large family, a welcoming retreat for guests or tenants, or even a private sanctuary for working from home and

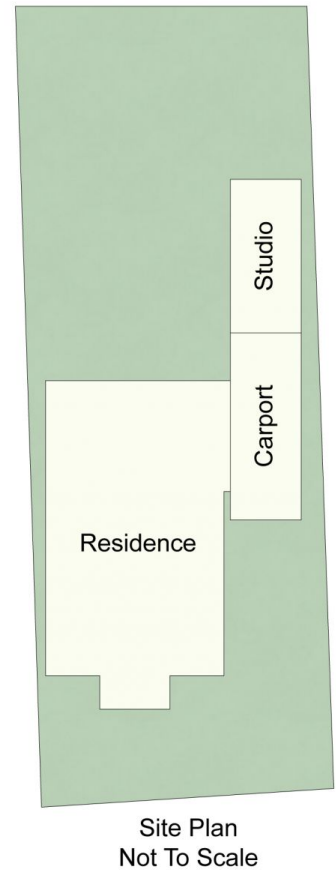
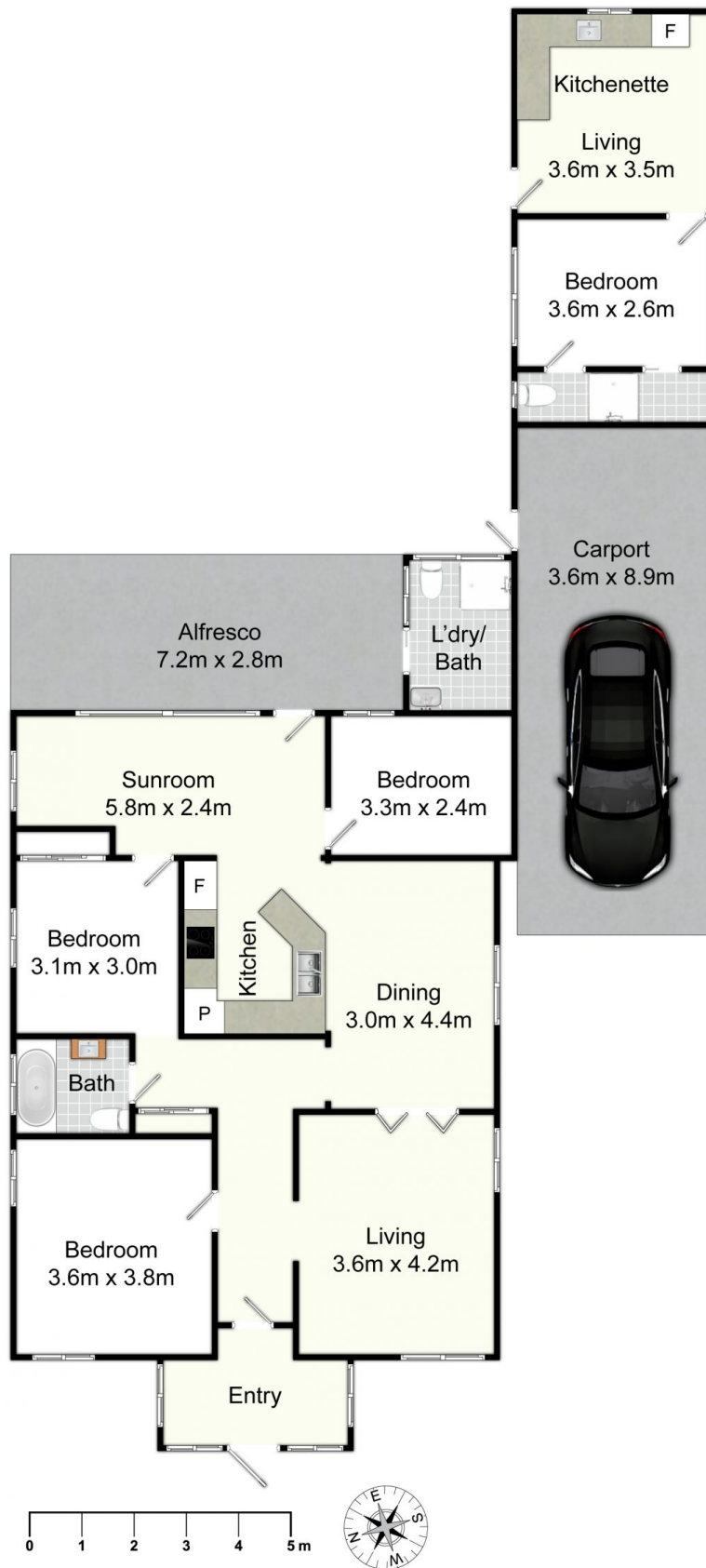
Price : \$ 700,000
Land Size : 604.5 sqm
View : <https://www.street.net.au/sale/nsw/lake-mac-quarie-east/belmont/residential/house/7835343>



Damon Sellis
02 4926 3933



Emily Wong
02 4926 3933



683 Pacific Hwy, Belmont

All information contained herein is gathered from sources we deem reliable. However, we cannot guarantee its accuracy and act as a messenger only in passing on the details. Interested parties should rely on their own inquiries and the contract for sale. The floor plans are artist's impressions only. The site plan is not to scale.

Street
Property.