

## 2/265 Wharf Road Newcastle NSW

Modern commercial offices available to lease early 2018.  
Superbly fitted out (to Government specifications).  
These offices are located opposite Newcastle Harbour with magnificent uninterrupted water views, park like grounds and cycle paths.

**Building Size** : 310 sqm  
**Land Size** : 310 sqm  
**View** : <https://www.street.net.au/lease/nsw/newcastle-region/newcastle/commercial/offices/7949882>

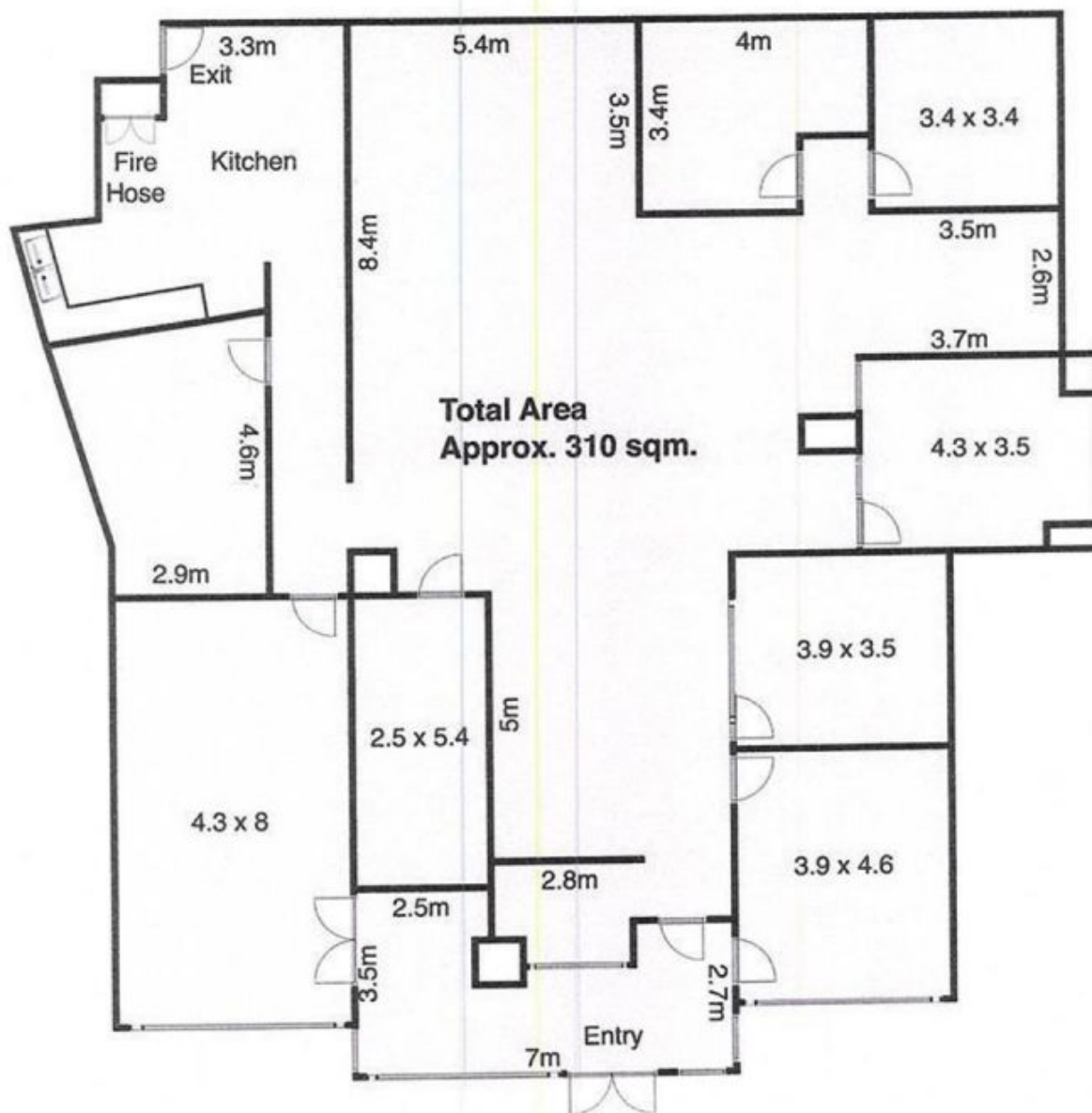
Features are:

Ducted air conditioning

7 partitioned offices including formal reception area and open office area

Kitchen (fully fitted out)

Boardroom



Suite 2, 265 Wharf Road,  
Newcastle

Measurements are approximate and are to be used as a guide only



**STREET**  
PROPERTY GROUP