



505/466 King Street Newcastle NSW

2  2  2 

Luxurious and spacious 2 bedroom apartment in the newly completed Verve Residences.

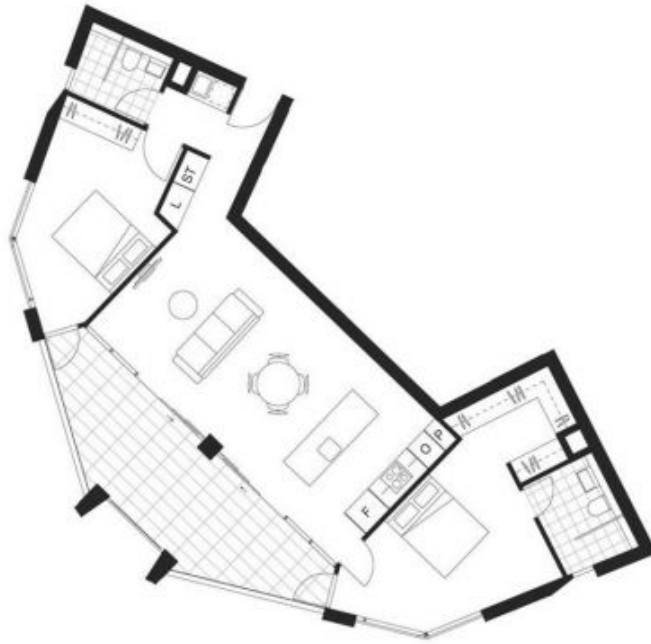
Offering tranquil garden surrounds.

Minutes walk to local shops, Wickham interchange, harbour and university.

View : <https://www.street.net.au/lease/nsw/newcastle-region/newcastle/residential/apartment/8018652>

FEATURES

- Generous open plan living opening onto deck
- Gourmet kitchen with Miele appliances, plumbed fridge space, stone bench and splash back
- Master bedroom with built-in robe and ensuite
- Floor to ceiling tiles in bathroom
- Air conditioning



APT NO.	LEVEL
305/466	03
405/466	04
505/466	05
605/466	06
705/466	07
805/466	08
905/466	09
1005/466	10

	2
	2
	1

AREA	SIZE
LIVING	92m ²
DECK	20m ²
GARAGE	13m ²
TOTAL	125m²



DISCLAIMER: The particulars are set out as a general outline for the guidance of intending purchasers and do not constitute an offer or contract. All descriptions, dimensions, references to conditions and necessary permissions for use and other details are given in good faith and are believed to be correct, but any intending purchaser should not rely on them as statements or representations of fact, but must satisfy themselves by inspection or otherwise to the contrary of such facts, and where necessary seek advice. The furniture and furnishings depicted are not included with any sale and purchasers must refer to the contract for sale for the list of inclusions. The position of furniture and furnishings should not be taken to indicate the true position of power points, TV connection points and the like. Planting is indicative only. Subfloors necessary for services are not depicted. No third party supplier or their agents has any authority to make or give any representations or warranties in relation to this property. Images are computer generated and indicative only. Completed apartments may vary from the image shown.

