

12/21 Babilla Close Beresfield NSW

2 

Near new and located in a sought after industrial estate in Beresfield with major businesses nearby. Close to M1 Motorway.

Features include:

High clearance roller door to generous internal space.

Three phase power, toilet, kitchenette and partitioned office area.

Internal lower floor area 163m² approx.

A mezzanine level of 68m² approx.

Total area 231m² approx.

Plus

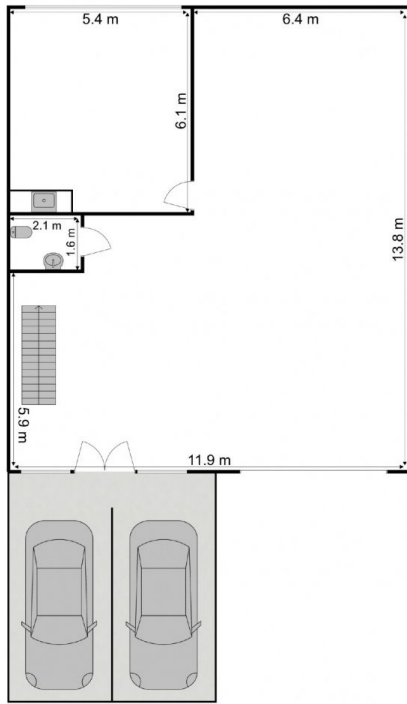
2 designated parallel car spaces directly in front of the building.

Type : Industrial
Building Size : 231 sqm
View : <https://www.street.net.au/lease/nsw/hunter-valley-lower/beresfield/commercial/industrial/8079107>

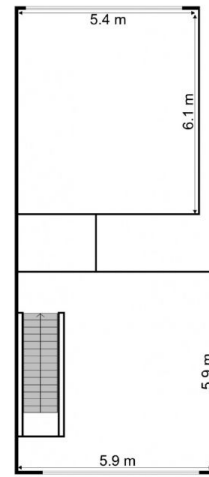


Patrick Mitchell
02 4926 3933

[For full version visit the website](https://www.street.net.au)



Lower Level



Mezzanine Level



12/21 Babilla Close,
Beresfield

Measurements are approximate and are to be used as a guide only

Street
Property.