



12/348 Pacific Highway Belmont North NSW

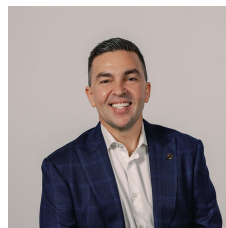
3 1 1

A low-maintenance lifestyle full of convenience awaits you at the pristine Belmont North complex of Pacific Green. Here, you'll find a corner townhouse boasting a spacious dual-level design, drenched in northerly light and winter sunshine. With two courtyards and a north-facing balcony, alfresco enjoyment is at your fingertips.

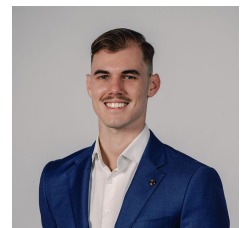
Designed for a carefree lifestyle, the open plan living and dining area seamlessly connects to the kitchen and both courtyards. Serving meals or entertaining guests outdoors has never been easier. Upstairs, three robed bedrooms and a full-size bathroom offer privacy and comfort. A single garage with rear roller door and a handy guest W/C complete this perfect package.

Located in Belmont North, this property places you within easy reach of Lake Macquarie, Belmont CBD, Jewellstown

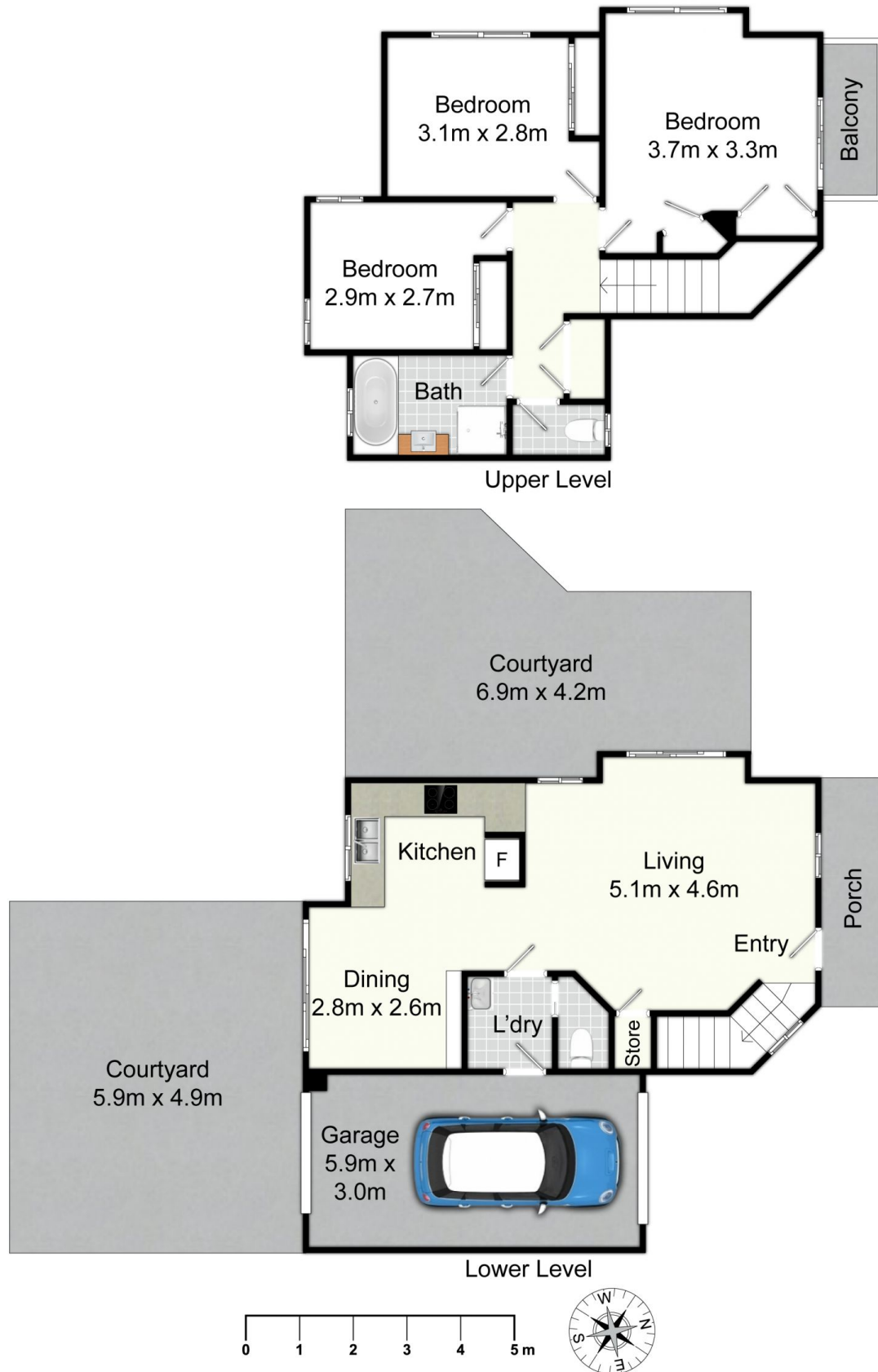
Price : \$ 637,500
Land Size : 172 sqm
View : <https://www.street.net.au/sale/nsw/lake-macquarie-east/belmont-north/residential/townhouse/8088269>



Damon Sellis
02 4926 3933



Drew Eather
02 4926 3933



Unit 12/348 Pacific Hwy, Belmont North

All information contained herein is gathered from sources we deem reliable. However, we cannot guarantee its accuracy and act as a messenger only in passing on the details. Interested parties should rely on their own inquiries and the contract for sale. The floor plans are artist's impressions only. The site plan is not to scale.

Street
Property.